



INSIDE:

- DISTRICT COMPARISONS
- COMMUNITY DEMOGRAPHICS
- STAFFING
- TAX RATES
- PER-PUPIL SPENDING
- REVENUES-EXPENSES
- ACADEMIC PERFORMANCE

Don't miss August 15 Annual Meeting notification inside!

Community Report

ANNUAL FACTS & FIGURES
Distributed: Spring 2022

Our remarkable success depends on support of community

Superintendent's message

Each year the Hamilton School District provides a Community Report to keep citizens informed and offer accountability on the progress being made to provide outstanding education to the youth in our area.

I hope you will gain a better understanding of the remarkable success we have attained, not only in terms of academic achievement, but also fiscal responsibility. You will see that Hamilton is among the highest-performing in the state, and yet our spending is comparatively low.

These are the things we can quantify. What is more difficult to convey are the incredible connections and strong relationships that educators in our district make with students every day to transform their learning and growth. Our staff members make a profound difference for students. Their work is inspiring.

As you review the data presented in this report, keep in mind the important role of community members who make our success possible. I am deeply grateful for our wonderful community that supports our students, staff and families.



Paul Mielke, Ph.D.
Superintendent

Hamilton School Board

- **Gabe Kolesari** – President
Sussex - term expires 2025
- **Jay Jones** – Vice President
Lannon - term expires 2023
- **Brian Schneider** – Treasurer
Menomonee Falls - term expires 2024
- **Dawn Van Aacken** – Clerk
Lisbon - term expires 2024
- **Michael Hyland**
At large - term expires 2023
- **Rachel Ziemer**
At large - term expires 2025
- **Rebecca Zingsheim**
Butler - term expires 2024

Information about the Hamilton School Board, its meetings and meeting highlights are posted on the district website at www.hamilton.k12.wi.us/district/school-board.

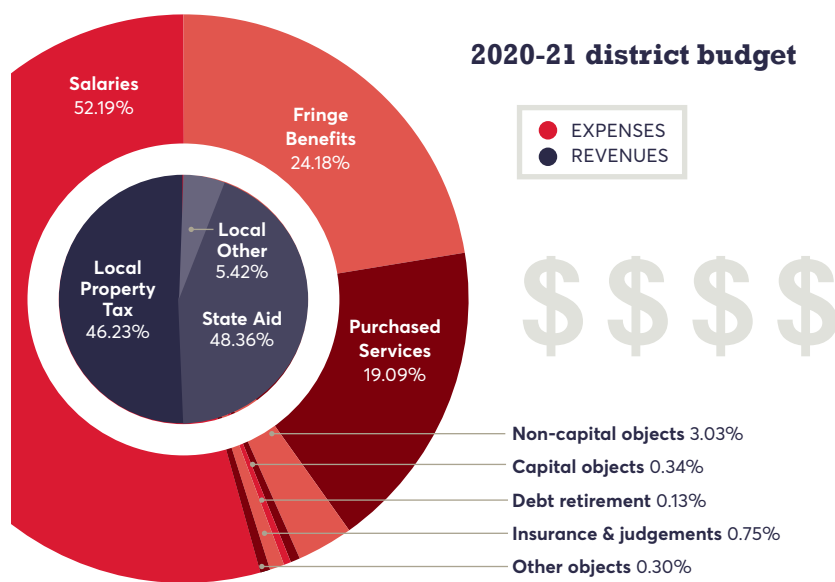
Our mission

Hamilton School District – in partnership with a diverse community – ensures maximum achievement for each student through a respectful and engaging learning environment, a rigorous, relevant curriculum and highly qualified, caring staff

NOTICE OF NONDISCRIMINATION: The Hamilton School District will not deny any person admission to any public school or deny any person participation in, deny any person the benefits of, or discriminate against any person in any curricular, extracurricular, pupil services, recreational or other program or activity because of a person's sex, race, color, religion, national origin, ancestry, creed, pregnancy, marital or parental status, sexual orientation, or physical, mental, emotional or learning disability, or any other reason prohibited by state or federal laws or regulations. The Hamilton School District prohibits staff, students and volunteers from discriminating against or harassing others based on the characteristics described above. The Hamilton School District is an equal opportunity employer and complies with all state and federal laws regarding non-discrimination in employment practices.

Making the most of your tax dollars

Financial facts & figures



Know your school district

Municipal apportionment of district levy

Sussex	36.74
Menomonee Falls	33.26
Lisbon	18.63
Butler	4.94
Lannon	3.76
Pewaukee	2.67

Personnel levels

Licensed instruction	58.49%
Aides/Support/Others	38.66%
Administration	2.86%

Highly qualified staff

Staff teaching in areas of certification	100%
Teachers with master's degree	73%

Student demographics

White	77.6%
Asian	8.7%
Hispanic	6.3%
Black	3.0%
2+ Races	4.0%
American Indian, Alaskan	0.2%
Hawaiian, Pacific Islander	0.2%

Economically disadvantaged

Disabled	15.3%
English language learner	9.1%
	1.3%

Staff-pupil ratios

District	State
Licensed instruction	1:148 / 1:12
Administration	1:251 / 1:194
Support staff	1:29 / 1:22

Graduation plans

District	State
4-year college/univ	76.54% / 89.8%
Voc tech college	14.00% / 16.1%
Employment, other	7.82% / 1.1%
Military	1.63% / 1.7%

Other statistics

District	State
Attendance	95.5% / 93.0%
Graduation	97.2% / 89.8%
Absenteeism	8.0% / 16.1%
Dropout	0% / 1.1%
Suspension	0.9% / 1.7%

Due to rounding, sums do not always equal 100. Source: Wisconsin Department of Public Instruction School District Performance Report and WISEdash

Total spending per pupil

DISTRICT	TOTAL \$
Pewaukee	\$15,353
Elmbrook	\$14,953
Menomonee Falls	\$14,326
State K-12 Average	\$14,259
Muskego-Norway	\$13,469
Oconomowoc	\$13,464
New Berlin	\$13,320
Kettle Moraine	\$13,253
Mukwonago	\$13,035
Waukesha	\$12,996
Hamilton	\$12,772

Source: WISEdash. Actual total spending for 2019-20. Total spending captures nearly all of a school district's spending including instruction, pupil staff support, operations and administration, transportation, facilities and food and community service. Listed are K-12 school districts in Waukesha County.

Comparison of area school districts' financials

This table compares southeastern Wisconsin CESA #1 K-12 school districts in various categories. Cost per student is total actual expenses. State aid does not include categorical aid. Enrollments are full-time equivalencies, not actual number of students.

District	Enrollment	Average income	Cost per pupil	Property value per pupil	Mil rate	Pupil-teacher ratio	Local levy	State aid
Brown Deer	1,726	\$50,170	\$15,653	\$595,628	13.77	11.26	39.3%	53.7%
Cedarburg	3,047	\$101,792	\$13,382	\$829,853	9.01	14.81	55.5%	35.6%
Cudahy	2,475	\$47,860	\$16,042	\$392,724	10.3	11.09	19.4%	64.1%
Elmbrook	7,430	\$123,986	\$14,953	\$1,162,728	9.72	13.48	73.1%	14.1%
Franklin	4,439	\$85,048	\$14,131	\$706,894	10.6	14.27	47.5%	40.6%
Germantown	3,961	\$85,841	\$14,342	\$893,891	9.61	13.25	60.3%	31.7%
Grafton	2,026	\$79,549	\$14,631	\$866,104	10.21	13.08	52.8%	33.6%
Greendale	2,629	\$70,607	\$14,588	\$553,329	11.17	13.23	34.6%	52.3%
Greenfield	3,575	\$53,628	\$13,855	\$585,948	9.46	13.19	33.4%	48.7%
Hamilton	4,958	\$88,968	\$12,772	\$729,600	9.13	15.37	45.5%	45.6%
Kenosha	21,092	\$57,767	\$13,875	\$437,646	8.59	12.61	26.1%	65.3%
Kettle Moraine	3,579	\$109,049	\$13,253	\$1,016,589	9.63	15.07	64.7%	20.4%
Menomonee Falls	3,877	\$80,567	\$14,326	\$942,068	9.41	13.64	63.6%	26.1%
Mequon	3,589	\$184,851	\$13,668	\$1,404,463	7.68	13.58	75.4%	14.3%
Milwaukee	75,384	\$45,419	\$15,661	\$357,702	9.58	14.21	20.0%	64.8%
Mukwonago	4,842	\$81,815	\$13,035	\$739,927	7.71	12.53	42.2%	45.0%
Muskego-Norway	4,965	\$86,139	\$13,469	\$721,026	8.58	15.01	44.5%	44.6%
New Berlin	4,573	\$87,332	\$13,320	\$1,103,456	9.36	14.97	76.9%	14.5%
North Ozaukee	790	\$76,286	\$15,995	\$766,153	10.3	13.22	35.0%	33.9%
Oak Creek	6,306	\$65,978	\$13,154	\$621,296	8.86	14.4	34.2%	54.5%
Oconomowoc	5,627	\$99,189	\$13,464	\$997,944	9.27	13.38	63.8%	27.4%
Pewaukee	2,826	\$103,589	\$15,353	\$974,799	9.65	15.11	63.8%	26.7%
Port Wash/Sauk	2,714	\$64,663	\$13,775	\$638,234	9.61	13.73	38.8%	51.3%
Racine	21,710	\$55,644	\$14,169	\$424,494	9.49	10.84	25.8%	65.9%
St. Francis	848	\$60,802	\$15,498	\$677,878	11.97	12.24	32.6%	35.7%
Shorewood	1,861	\$107,381	\$17,367	\$834,532	14.07	11.35	57.8%	30.4%
South Milwaukee	3,011	\$49,010	\$14,836	\$392,953	10.92	12.59	19.5%	67.2%
Waukesha	12,572	\$74,204	\$12,996	\$776,039	8.18	13.21	45.8%	43.0%
Wauwatosa	6,319	\$88,168	\$12,922	\$978,529	9.34	13.25	47.8%	31.5%
West Allis	8,414	\$64,865	\$16,945	\$517,708	9.24	11.86	32.1%	53.9%
Whitefish Bay	2,850	\$184,293	\$12,927	\$796,123	9.38	14.1	55.3%	39.0%
Whitnall	2,196	\$69,157	\$13,905	\$761,791	9.12	12.49	46.9%	37.4%

Sources: Wisconsin Policy Forum, Wisconsin Department of Public Instruction WISEdash, Wisconsin Department of Revenue. Data from 2019-20 school year. Average income, local levy and state aid from 2019 calendar year.

20-year trends: Tax rates & enrollments

