

Staff and community putting children first

Superintendent's message

Hamilton School District is proud to share its Community Report, which details academic performance, community demographics, staffing and financial data. Most of the data reported in this document is from the 2018-19 school year – the most recent year with comparisons to other school districts and state averages.

This public report provides accountability on our ability to be good stewards of our community's investment in its schools. The district continues to have among the highest academic results in Wisconsin with spending significantly below the state average.

Like every school district in this country, we had difficult decisions to make in the face of a pandemic. Because of our dedicated staff, we were able to offer families a choice of in-person or virtual education this entire school year. Our community should be proud of the monumental effort that staff put forth to ensure a successful school year.

No doubt there will be future challenges. But because of our accomplishments and the community's commitment to putting children first, I have confidence that the Hamilton School District will continue to be a great place for students, staff and families.



Paul Mielke, Ph.D.
Superintendent

Hamilton School Board

- Gabe Kolesari (Sussex) – President
- Jennifer Waltz (At large) – V. Pres.
- Jay Jones (Lannon) – Treasurer
- Dawn Van Aacken (Lisbon) – Clerk
- Michael Hyland (At large)
- Brian Schneider (Menomonee Falls)
- Rebecca Zingsheim (Butler)

Information about the Hamilton School Board, its meetings and meeting highlights are posted on the district website at www.hamilton.k12.wi.us/district/school-board.

Hamilton School District
W220 N6151 Town Line Road
Sussex, WI 53089

NONPROFIT ORG
US POSTAGE PAID
SUSSEX, WI 53089
PERMIT NO. 3

****ECRWSS****
LOCAL POSTAL CUSTOMER

**Our
mission**

Hamilton School District – in partnership with a diverse community – ensures maximum achievement for each student through a respectful and engaging learning environment, a rigorous, relevant curriculum and highly qualified, caring staff

NOTICE OF NONDISCRIMINATION: The Hamilton School District will not deny any person admission to any public school or deny any person participation in, deny any person the benefits of, or discriminate against any person in any curricular, extracurricular, pupil services, recreational or other program or activity because of a person's sex, race, color, religion, national origin, ancestry, creed, pregnancy, marital or parental status, sexual orientation, or physical, mental, emotional or learning disability, or any other reason prohibited by state or federal laws or regulations. The Hamilton School District prohibits staff, students and volunteers from discriminating against or harassing others based on the characteristics described above. The Hamilton School District is an equal opportunity employer and complies with all state and federal laws regarding non-discrimination in employment practices.



INSIDE:

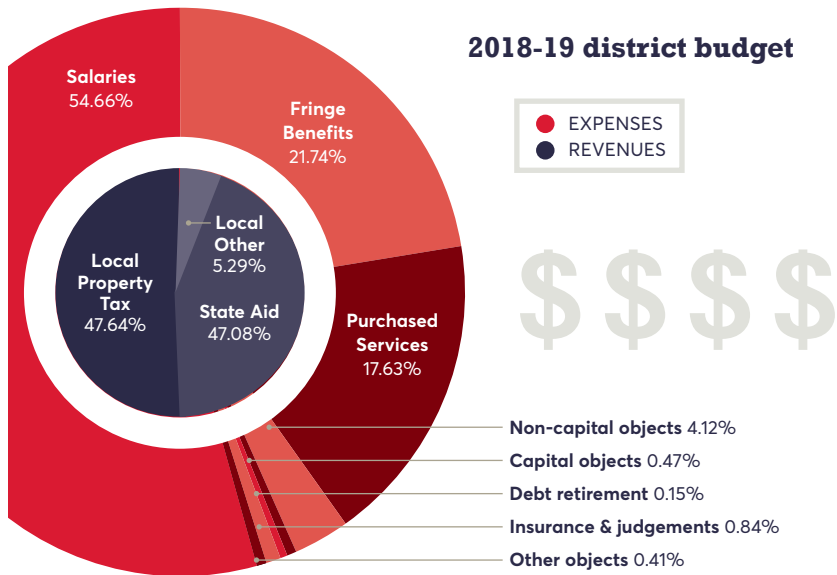
- DISTRICT COMPARISONS
- COMMUNITY DEMOGRAPHICS
- STAFFING
- TAX RATES
- PER-PUPIL SPENDING
- REVENUES-EXPENSES
- ACADEMIC PERFORMANCE

Community Report

ANNUAL FACTS & FIGURES

Distributed: Spring 2021

Financial facts & figures



Know your school district

Municipal apportionment of district levy

Sussex	36.95%
Menomonee Falls	33.29%
Lisbon	18.61%
Butler	5.6%
Lannon	3.63%
Pewaukee	1.92%

Personnel levels

Licensed instruction	59.82%
Aides/Support/Others	37.12%
Administration	3.06%

Highly qualified staff

Staff teaching in areas of certification	100%
Teachers with master's degree	70%

Student demographics

White	80.8%
Asian	7.0%
Hispanic	5.7%
Black	2.5%
2+ Races	3.6%
American Indian, Alaskan	0.2%
Hawaiian, Pacific Islander	0.2%

Economically disadvantaged	13.4%
Disabled	9.8%
English language learner	1.5%

Staff-pupil ratios

	District	State
Licensed instruction	1:16	1:13
Administration	1:245	1:201
Support staff	1:29	1:23

Graduation plans

	District	State
4-year college/univ	74.06%	52.27%
Voc tech college	13.26%	20.9%
Employment, other	2.60%	7.85%
Military	1.73%	2.83%

Other statistics

	District	State
Attendance	95.8%	93.9%
Graduation	98.5%	90.0%
Absenteeism	5.6%	12.9%
Dropout	0.1%	1.3%
Suspension	1.9%	8.5%

Due to rounding, sums do not always equal 100.
Source: Wisconsin Department of Public Instruction School District Performance Report and WISEDash



Non-capital objects 4.12%
Capital objects 0.47%
Debt retirement 0.15%
Insurance & judgements 0.84%
Other objects 0.41%

Total spending per pupil

DISTRICT	TOTAL \$
Kettle Moraine	\$14,149
New Berlin	\$13,842
Menomonee Falls	\$13,605
State K-12 average	\$13,505
Muskego-Norway	\$13,355
Elmbrook	\$13,163
Pewaukee	\$12,450
Oconomowoc	\$12,152
Waukesha	\$11,998
Mukwonago	\$11,989
Hamilton	\$11,178

Source: WISEDash. Actual total spending for 2017-18. Total spending captures nearly all of a school district's spending including instruction, pupil staff support, operations and administration, transportation, facilities and food and community service. Listed are K-12 school districts in Waukesha County.

Comparison of area school districts' financials

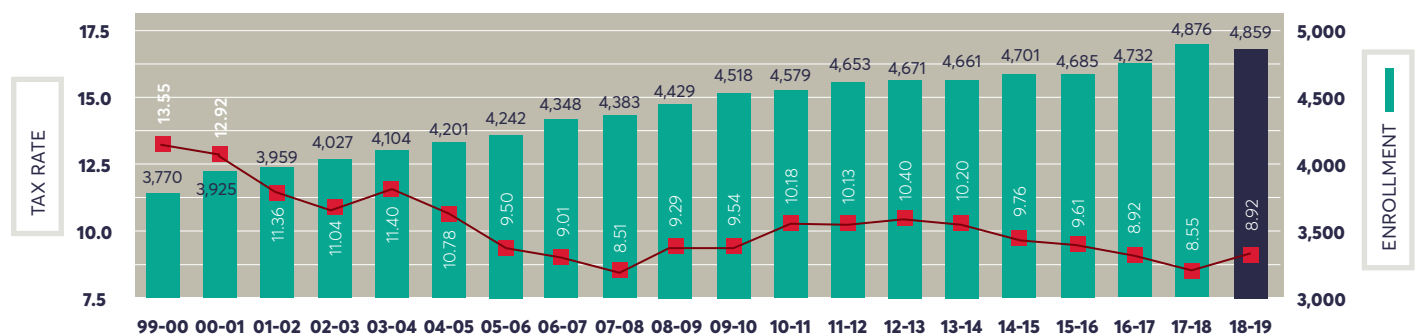
This table compares southeastern Wisconsin CESA #1 K-12 school districts in various categories. Cost per student is total actual expenses. State aid does not include categorical aid. Enrollments are full-time equivalencies, not actual number of students.

District	Enrollment	Average income	Cost per pupil	Property value per pupil	Mil rate	Pupil-teacher ratio	Local levy	State aid
Brown Deer	1,703	\$50,068	\$15,092	\$555,950	14.14	11.6	41.7%	50.0%
Cedarburg	2,929	\$103,042	\$12,876	\$772,914	9.10	14.8	54.2%	36.5%
Cudahy	2,437	\$46,776	\$15,287	\$360,787	11.49	10.9	21.2%	63.9%
Elmbrook	7,158	\$121,804	\$13,163	\$1,173,059	9.99	13.6	76.0%	13.0%
Franklin	4,280	\$82,689	\$13,891	\$667,416	11.57	16.0	49.9%	38.7%
Germantown	3,935	\$82,489	\$13,288	\$824,005	8.91	13.9	58.5%	34.0%
Grafton	2,044	\$79,865	\$13,390	\$779,223	11.27	13.1	57.0%	30.9%
Greendale	2,426	\$68,982	\$13,825	\$536,286	11.03	13.2	36.4%	48.5%
Greenfield	3,432	\$52,861	\$13,582	\$599,493	11.35	13.8	40.2%	46.8%
Hamilton	4,853	\$83,676	\$11,178	\$692,791	8.55	16.0	49.9%	42.9%
Kenosha	21,837	\$57,223	\$13,199	\$389,580	10.23	13.0	27.1%	64.7%
Kettle Moraine	3,709	\$104,520	\$14,149	\$914,472	10.08	14.5	65.8%	20.1%
Menomonee Falls	3,820	\$82,309	\$13,605	\$910,467	11.25	13.9	69.9%	18.3%
Mequon	3,530	\$188,012	\$13,964	\$1,331,121	8.07	13.5	77.6%	12.5%
Milwaukee	77,164	\$45,141	\$15,249	\$332,613	10.90	16.8	22.5%	62.6%
Mukwonago	4,678	\$80,551	\$11,989	\$682,584	8.32	14.5	43.3%	44.4%
Muskego-Norway	4,915	\$83,776	\$13,355	\$649,698	9.49	15.4	45.3%	44.8%
New Berlin	4,478	\$84,060	\$13,842	\$1,024,958	10.83	14.4	80.0%	12.1%
North Ozaukee	840	\$74,495	\$13,146	\$716,053	10.06	13.3	39.7%	29.9%
Oak Creek	6,406	\$65,413	\$12,203	\$571,933	8.66	15.1	35.5%	53.1%
Oconomowoc	5,737	\$99,913	\$12,152	\$904,649	9.62	14.4	65.5%	25.6%
Pewaukee	2,822	\$104,300	\$12,450	\$915,700	10.01	15.2	68.4%	21.9%
Port Wash/Sauk	2,673	\$63,233	\$12,870	\$595,918	10.37	13.4	42.3%	47.5%
Racine	21,647	\$54,936	\$13,534	\$401,472	10.02	10.8	27.3%	63.1%
St. Francis	847	\$58,721	\$14,345	\$657,497	12.13	14.3	34.9%	33.6%
Shorewood	1,899	\$107,319	\$17,193	\$761,589	13.88	12.1	57.4%	29.8%
South Milwaukee	3,075	\$48,609	\$13,979	\$363,661	11.38	13.3	19.7%	67.4%
Waukesha	12,822	\$72,981	\$11,998	\$711,677	8.21	13.3	48.3%	41.6%
Wauwatosa	6,253	\$87,804	\$12,305	\$911,239	7.89	13.4	51.1%	29.6%
West Allis	8,537	\$47,919	\$13,092	\$497,119	10.99	12.2	37.8%	47.9%
Whitefish Bay	2,830	\$180,445	\$11,829	\$763,556	10.35	13.9	58.7%	36.0%
Whitnall	2,148	\$70,155	\$12,443	\$775,199	10.09	13.1	54.1%	29.2%

Sources: Wisconsin Policy Forum and Wisconsin Department of Public Instruction School Financial Services Data Warehouse and School District Performance Report. Data from 2017-18 school year.

20-year trends: Tax rates & enrollments

Tax rate is local property taxes paid per \$1,000 of equalized property value for school purposes. Enrollment is head count of all students the district is responsible for educating, not full-time equivalency.





Hamilton gets high marks among Waukesha County K-12s

Wisconsin public school districts and schools get a State Report Card that shows evidence of how well they are preparing students. One of five categories is assigned based on state assessments taken in the 2018-19 school year: significantly exceeds expectations (83-100); exceeds expectations (73-82.9); meets expectations (63-72.9); meets few expectations (53-62.9); and fails to meet expectations (52.9 and below).

ELEMENTARY SCHOOLS						
School	Overall score	Overall rating	Achvmt score	Reading Writing	Math	Enrollment
Mill Valley	97.4	Significantly Exceeds Expectations	97.6	48.7	48.9	572
Summit	95.9		95.1	45.1	50	455
Tonawanda	94.4		96.7	46.7	50	399
Marcy	93.6		99.6	49.6	50	594
Eagleville Charter	92.4		94	44.7	49.3	113
Clarendon Avenue	91.6		91.8	43.9	47.9	509
Kettle Moraine Explore	90.1		92.6	47	45.6	135
Rose Glen	89.9		90.5	41.6	48.9	528
Park Lawn	89.7		82.6	40.2	42.4	438
Bay Lane	89.6		90.7	44	46.7	856
Woodside	89.1		94.8	45	49.8	659
Burleigh	88.8		91.2	41.8	49.4	850
Banting	88.6		66.4	32.7	33.7	472
Brookfield	88.5		93.1	43.1	50	580
Rolling Hills	88.2		88.8	41.2	47.6	491
Section	87.6		93.5	44.3	49.2	488
Elmwood	87.4		91.1	42.8	48.3	584
Lowell	87.4		73.6	32.5	41.1	256
Prairie View	86.6		90.9	42.7	48.2	370
Swanson	86		92.7	43	49.7	750
Maple Avenue	86	95.6	45.6	50	423	
Magee	85.9	96.3	47.2	49.1	239	
Meadowbrook	85.6	83.8	41.3	42.5	308	
Ixonia	85	77	34.8	42.2	280	
Lannon	84.2	94.7	44.7	50	334	
Ronald Reagan	84.2	90.5	43.9	46.6	605	
Wauk STEM	84.1	81.3	35.9	45.4	762	
Greenland	84	88.2	40.8	47.4	397	
Cushing	83.1	91.7	44.2	47.5	432	
Big Bend	83	81.2	38	43.2	428	
Meadow View	82.8	Exceeds Expectations	77.5	34.6	42.9	462
Poplar Creek	82.4		83.9	39.5	44.4	472
Dixon	81.7		91	41.1	49.9	565
Horizon	81.4		81.8	41	40.8	648
Orchard Lane	81.3		87.2	41.7	45.5	490
Blair	80.8		46.7	22.4	24.3	304
Hillcrest	80.8		79.6	37.2	42.4	320
Heyer	79.4		57.5	26.4	31.1	385
Wales	76.8		76.5	37.2	39.3	345
Pewaukee Lake	76		85.7	40.8	44.9	1,034
Hawthorne	75.8		48.9	23.5	25.4	213
Valley View	75.7		79.9	33.4	46.5	361
Bethesda	75.7		69.7	33.9	35.8	495
Riverside	75.4		77.8	33.7	44.1	435
Summit View	74.9		77.7	35.8	41.9	569
Prairie	74.7	68.6	31.6	37	271	
Dousman	71.9	Meets Expectations	76.7	38	38.7	420
Lakeview	70.9		77.8	36.4	41.4	345
Whittier	69.2		48.1	23.8	24.3	220
Hadfield	66.5		50.9	24.3	26.6	296
eAchieve	55		Meets Few	43.8	23.8	20

SCHOOL DISTRICTS						
District	Overall score	Overall rating	Achvmt score	Reading Writing	Math	Enrollment
Elmbrook	88.9	Significantly Exceeds Expectations	89.9	43.4	46.5	7,334
New Berlin	86.9		85.9	41.8	44.1	4,348
Hamilton	86.4		90.8	44.8	46	4,859
Pewaukee	83.9		82.6	42	40.6	2,995
Muskego-Norway	83.8		85.8	41.8	44	4,850
Mukwonago	83		81.5	39.6	41.9	5,040
Kettle Moraine	81.5	Exceeds Expectations	81.5	40.6	40.9	3,868
Menomonee Falls	81.2		77	37.4	39.6	4,002
Oconomowoc	80.2		75.3	36.4	38.9	5,272
Waukesha	70.9	Meets Expectations	63.2	31.8	31.4	11,920

MIDDLE SCHOOLS						
School	Overall score	Overall rating	Achvmt score	Reading Writing	Math	Enrollment
Lake Denoon	89.8	Significantly Exceeds Expectations	91.6	43.4	48.2	715
Pilgrim Park	85.8		88.4	43	45.4	796
Templeton	85.3		87.7	44.8	42.9	1,115
Muskego Lakes	84.2		85.5	41.9	43.6	724
Asa Clark	80.5	Exceeds Expectations	79.5	41.2	38.3	429
Wisconsin Hills	79.5		81.2	40.3	40.9	835
Silver Lake	78.7		75.2	37.3	37.9	635
North	75.8		74.2	38	36.2	875
Kettle Moraine	75.7		82.4	40.8	41.6	839
Park View	74.3		76.1	39	37.1	763
Butler	73.5		61.4	32.2	29.2	894
Nature Hill	72.5	Meets Expectations	70.4	34.2	36.2	890
Les Paul	68.7		63.1	32.8	30.3	697
Horning	67.1		46.8	25.7	21.1	680

HIGH SCHOOLS						
School	Overall score	Overall rating	Achvmt score	Reading Writing	Math	Enrollment
KM Health Sci	94.9	Significantly Exceeds Expectations	95.5	49.4	46.1	173
Brook East	91.5		92.5	45.6	46.9	1,298
Brook Central	90.7		90.4	45.3	45.1	1,244
Arrowhead	89.7		89.3	42.4	46.9	2,139
NB Eisenhower	89		90.8	44.8	46	1,114
Wauk Engin Prep	88.4		93.8	45.7	48.1	197
Pewaukee	87.3		84.5	43.9	40.6	884
KM Global School	85.8		86.8	44.4	42.4	91
Menomonee Falls	85.3		77.5	39.6	37.9	1,321
New Berlin	83.5		77.1	38.1	39	1,083
Hamilton	83.5	85.3	42.8	42.5	1,458	
Waukesha West	83.4	75.2	40	35.2	1,161	
Mukwonago	81.9	Exceeds Expectations	75.3	36.9	38.4	1,622
Muskego	80.5		79.2	39.4	39.8	1,638
Oconomowoc	80		73	35.7	37.3	1,715
KM Arts & Perf	78.6		80.7	47.3	33.4	143
Kettle Moraine	77		72.2	35.4	36.8	968
Wauk Hlth Acad	70.4	Meets	68.1	35.8	32.3	169
Waukesha North	61.4	Meets Few Expectations	53.2	28	25.2	1,165
Waukesha South	61.4		42.5	23	19.5	945
eAchieve Acad	59.9		56.6	33.6	23	737

Living our commitment to students

Hamilton School District achievements are a testament to the commitment parents, staff and community have to the children of our community. In this district, we live our motto, "Each Child, Every Opportunity for Success." Please take time to review data on one source of pride — our academic achievement.

HIGHLIGHTS: Wisconsin Forward Exam results

Hamilton School District students scored well on the 2018-19 Wisconsin Forward Exam, topping the statewide average by 21 – 29 percentage points and outperforming most Waukesha County school districts in all subjects.

Compared to the state average, Hamilton scores were:

- 27.8 percentage points higher in mathematics;
- 26.2 points higher in English-language arts;
- 24.4 points higher in science; and
- 21.7 points higher in social studies.

Among Waukesha County's 10 K-12 school districts, Hamilton was the top performer in science, English-language arts and social studies, and it was second highest in mathematics.

The Forward Exam is a criterion-referenced assessment in which a standard is set and scores reflect the percentage of students who achieve at that level. Four categories of proficiency are minimal, basic, proficient and advanced. The tables to the right show the percentage of students who achieved at the proficient and advanced proficient levels.

Source: 2018-19 Wisconsin Department of Public Instruction WISEdash



Waukesha County K-12 Forward Exam Comparisons

Grade 3	Grade 4	Grade 5	Grade 6	Grade 7	Grade 8	District
68.1 Hamilton	70.2 Hamilton	76.4 Hamilton	64.7 Kettle Mor	68.3 Muskego	60.8 Hamilton	67.1 Hamilton
59.5 Mukwonago	69.2 Muskego	66.9 Mukwonago	64.1 Hamilton	64.5 New Berlin	50.6 Elmbrook	61.0 Muskego
59.2 Muskego	64.4 Elmbrook	62.7 Elmbrook	63.3 New Berlin	64.1 Hamilton	50.4 Kettle Mor	59.1 Elmbrook
57.2 Elmbrook	63.0 Mukwonago	62.2 Muskego	62.0 Mukwonago	63.8 Pewaukee	50.1 New Berlin	58.5 Mukwonago
57.2 New Berlin	60.7 New Berlin	57.5 Kettle Mor	61.3 Pewaukee	61.9 Kettle Mor	49.1 Pewaukee	58.5 New Berlin
53.6 Kettle Mor	59.8 Kettle Mor	55.7 New Berlin	60.8 Muskego	60.2 Elmbrook	47.3 Muskego	58.2 Kettle Mor
53.4 Oconom	57.5 Pewaukee	55.1 Pewaukee	59.3 Elmbrook	59.0 Mukwonago	43.2 Men Falls	55.5 Pewaukee
46.8 Pewaukee	55.3 Oconom	54.0 Oconom	50.7 Oconom	55.4 Men Falls	42.0 Mukwonago	48.2 Oconom
46.7 Men Falls	46.5 Men Falls	43.7 Waukesha	46.9 Men Falls	44.7 State	36.5 State	46.9 Men Falls
40.7 Waukesha	45.1 Waukesha	41.9 Men Falls	41.1 State	42.6 Oconom	31.9 Waukesha	40.9 State
39.1 State	43.7 State	40.3 State	40.7 Waukesha	42.3 Waukesha	30.7 Oconom	40.6 Waukesha

ENGLISH-LANGUAGE ARTS

Grade 3	Grade 4	Grade 5	Grade 6	Grade 7	Grade 8	District
81.2 Hamilton	81.8 Hamilton	86.7 Muskego	78.3 Muskego	63.5 New Berlin	64.7 Muskego	72.9 Muskego
74.9 Mukwonago	75.0 Elmbrook	81.6 Mukwonago	75.5 New Berlin	63.3 Muskego	62.0 New Berlin	71.2 Hamilton
72.2 Muskego	73.3 Muskego	76.7 Hamilton	69.4 Elmbrook	62.3 Kettle Mor	61.9 Hamilton	68.2 Elmbrook
72.0 Elmbrook	73.2 Mukwonago	74.6 Elmbrook	67.3 Mukwonago	60.6 Hamilton	58.8 Pewaukee	67.6 Mukwonago
71.8 Oconom	70.5 Men Falls	68.5 New Berlin	66.9 Kettle Mor	60.2 Elmbrook	58.5 Kettle Mor	67.2 New Berlin
71.6 New Berlin	68.1 Oconom	64.4 Oconom	66.7 Hamilton	57.7 Pewaukee	58.2 Elmbrook	61.4 Kettle Mor
70.6 Men Falls	63.0 New Berlin	62.0 Kettle Mor	63.7 Pewaukee	55.8 Men Falls	56.3 Mukwonago	60.8 Pewaukee
65.5 Pewaukee	62.8 Pewaukee	61.0 Men Falls	54.1 Men Falls	55.8 Mukwonago	41.7 Men Falls	58.7 Men Falls
64.7 Kettle Mor	54.7 Kettle Mor	56.5 Pewaukee	50.7 Oconom	49.9 Oconom	36.6 Waukesha	57.0 Oconom
52.9 Waukesha	49.7 Waukesha	54.9 Waukesha	42.9 State	37.7 Waukesha	35.9 Oconom	45.4 Waukesha
50.2 State	46.2 State	46.8 State	42.6 Waukesha	37.1 State	35.7 State	43.4 State

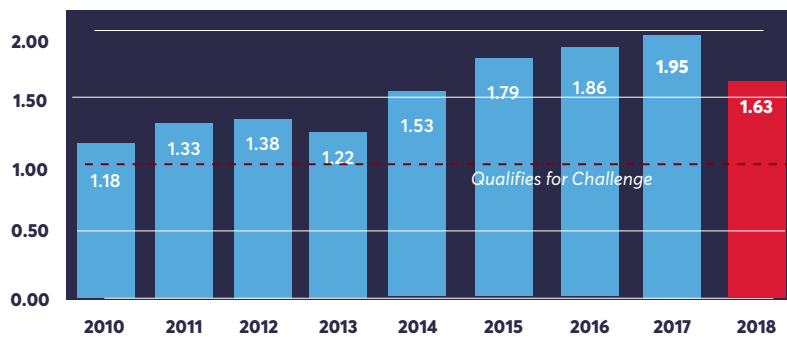
MATHEMATICS

AP Exam pass rates

The College Board offers Advanced Placement testing to high school students. The University of Wisconsin System and other universities recognize credits earned in AP courses. The graph shows Hamilton's **Challenge Index** – the number of AP exams given divided by seniors who graduate. Scores of 1.0 or higher make the Washington Post (previously Newsweek) top high school ranking.

Source: 2018-19 Wisconsin Department of Public Instruction WISEdash

	STUDENTS IN AP CLASSES	TESTS TAKEN	PERCENTAGE SCORING 3 OR ABOVE
Hamilton	391	658	89.7%
State	43,766	73,644	66.3%



Wisconsin School Report Card

Performance among highest in state

For the first time in Hamilton School District history, all eligible schools received the highest 5-star "significantly exceeds expectations" designation on the 2019 Wisconsin School Report Card.

What is not a first? The district as a whole earning the top rating. In fact, Hamilton has significantly exceeded expectations all six years Wisconsin School Report Cards have been produced.

State comparisons

Hamilton was the 10th highest among Wisconsin's 367 K-12 school districts and was one of only 24 districts to earn the top designation of "significantly exceeds" expectations for performance.

Hamilton also had the:

- second highest student achievement score;
- third highest mathematics score;
- third highest postsecondary readiness score; and
- fifth highest reading and language arts results.

Waukesha County comparisons

Among Waukesha County's 10 K-12 school districts, Hamilton was first for overall student achievement and reading language arts achievement, second for mathematics achievement and third for the overall accountability score.

Data on this page reports testing results from the 2018-19 school year - the most current comparable test data available. Silver Spring Intermediate School did not open until the 2019-20 school year.

- Source: 2018-19 Wisconsin Department of Public Instruction WISEdash.

ACT Test results

Students	English	Math	Reading	Science	Composite	
332	21.3	22.1	23.0	22.6	22.3	Hamilton
62,946	18.5	19.5	20.1	19.9	19.6	State
1,782,820	20.1	20.4	21.2	20.6	20.7	Nation

Source: ACT National Profile Report 2019

